



USM Haller Soft Panel



Operating instructions

1	Introduction	3
2	Product variants	4
2.1	Sizes	4
2.2	Patterns and colours	4
3	Handling	5
3.1	Fitting the Soft Panel	5
3.2	Flipping the Soft Panel	5
3.3	Sliding the Soft Panel	6
3.4	Combining Soft Panels	6
3.5	Replacing the handle	7
4	Care instructions	8
4.1	Dry cleaning	8
4.2	Wet cleaning	8

1 Introduction

Operating instructions
USM Haller Soft Panel

01.26/en

The new USM Haller Soft Panel adds a soft and playful touch to the USM product range. The textile panels come with four magnets and can be easily clicked into the tubular structure of the modular furniture system — with no assembly work or additional fixtures. It's equally easy to fold them up or down to open and flip into the next compartment. And of course you can just turn things round at any time or position them somewhere else in the furniture.

Playful

The furniture's aesthetics and function are transformed in the blink of an eye, adapting to your mood or changing requirements. Patterns and colours can be combined like pieces of a jigsaw puzzle to form a cohesive whole or an eclectic mix.

Soft

The USM Haller Soft Panel is made of high-quality synthetic fibre, 40% of which contains recycled marine plastic. Lightweight, stable and with customary durability. Soft to the touch and with a warm aesthetic — a surprising contrast in the classic metallic world. Another special feature: the panels reduce noise and improve the room acoustics. Typical of USM: design, functionality and sustainability in symbiosis.

Easy

The lightweight panels are easy to attach and move without any assembly work or additional fixtures. This is why they are ideal for giving existing furniture a fresh twist.

Seaqual Initiative

The panels consist of polyester fleece with 40% recycled marine plastic.

Greenguard

The USM Haller Soft Panels are Greenguard Gold certification for low chemical emissions, confirming their compliance with particularly strict emission standards.



2 Product variants

2.1 Sizes

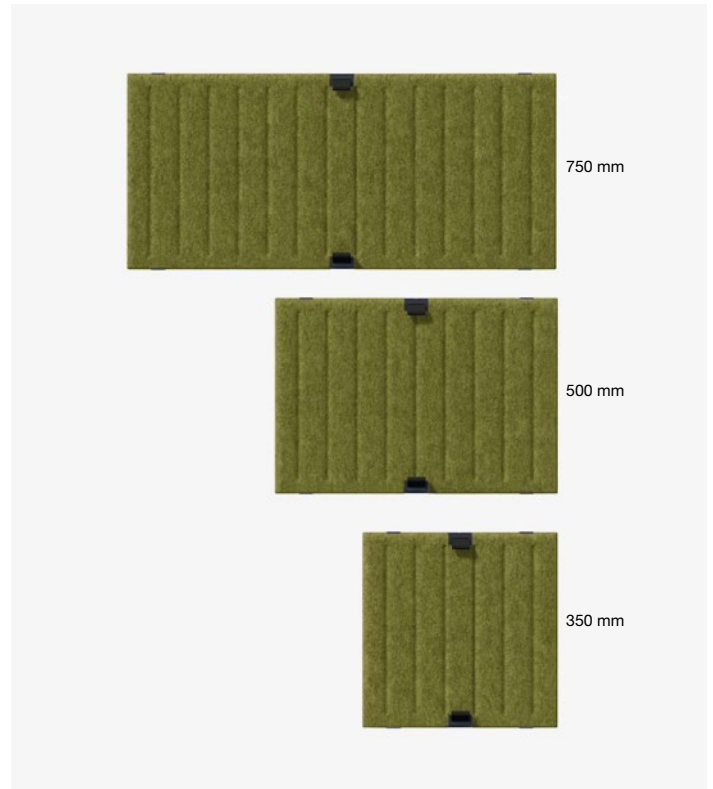
The USM Haller Soft Panels are available in three sizes to fit the most common USM Haller dimensions.

750 × 350 mm

500 × 350 mm

350 × 350 mm

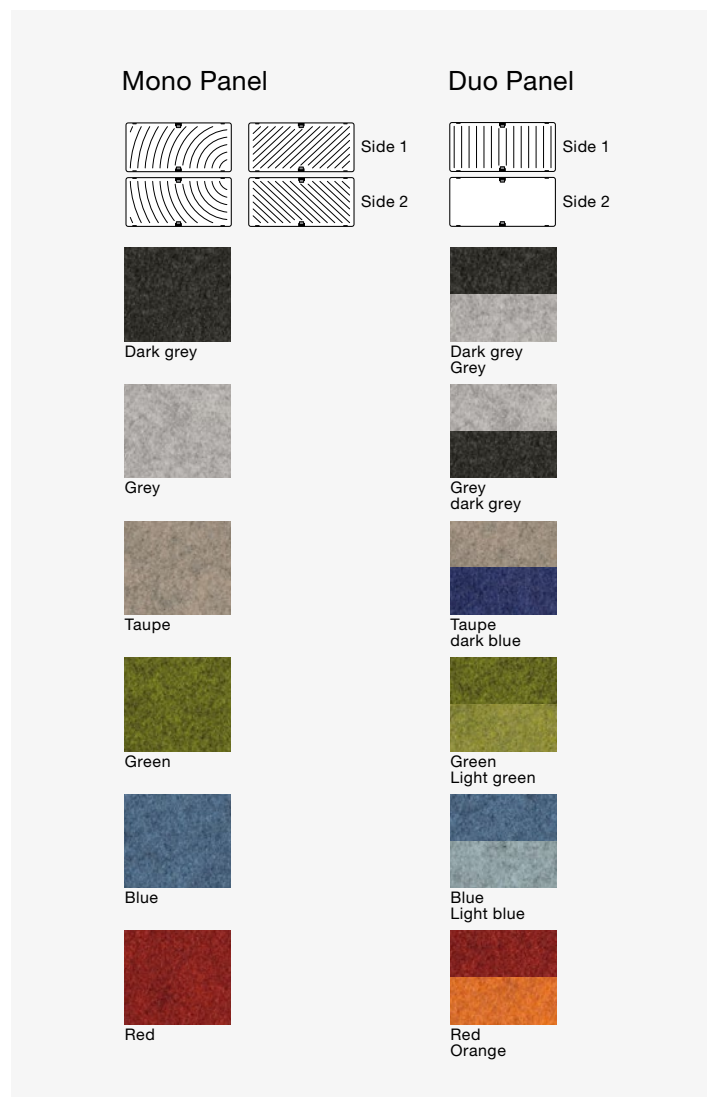
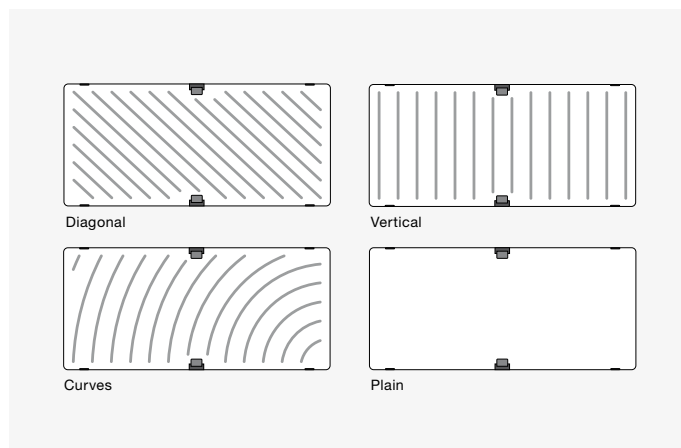
Smaller panels can be slid horizontally in larger modules.



2.2 Patterns and colours

There are three patterns to choose from: diagonal, curves and vertical. Mono Panels feature the same pattern on both sides (either diagonal or curved grooves) and come in a single colour. Duo Panels have vertical grooves on one side, they are plain on the back and available in colour combinations.

USM Haller Soft Panels are available in various colours, depending on which pattern you choose. Mono Panels are available in six different colours. Duo Panels are available in the same six colours on the vertically patterned side, but have a different accent colour on the plain side.



3 Handling



Warning: magnetic field

Active medical implants must be kept at a distance of at least 8 cm from magnets at all times.



Keep furniture and magnets dust-free at all times

Before installing the USM Haller Soft Panel into the furniture, make sure the furniture, its structure and the Soft Panel magnets are free of dust and dirt. Otherwise scratches may appear on the tubes. This must be observed throughout the entire period of use.

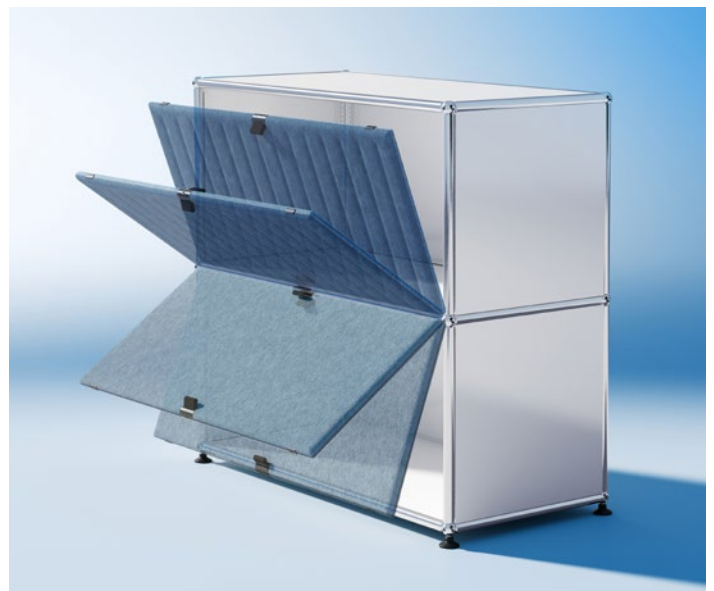
When storing Soft Panels, always use a suitable intermediate layer between the individual panels to prevent them from bending or deforming.

3.1 Fitting the Soft Panel

The USM Haller Soft Panel is fitted with four magnets and can be easily clicked into the tubular structure of the modular furniture system. No assembly work or additional fixtures required. The compartment height must be 350 mm. Soft Panels can be removed and repositioned at any time. For optimal fit and flawless functionality, ensure the structure is properly aligned at 90° and features a closed frame.

3.2 Flipping the soft panel

The USM Haller Soft Panel can be opened upwards or downwards simply by pulling the handle. If the compartment above or below is 350 mm, the panel can be flipped into that space and clicks into place. It can also be turned around or placed elsewhere in the furniture at any time.



3.3 Sliding the Soft Panel

The USM Haller Soft Panel can also be used as a sliding element. Smaller panels can be clicked into wider compartments (with a height of 350 mm) allowing them to slide right and left. The magnets keep the Soft Panel securely positioned between the tubular structure. Please ensure that you do not move the Soft Panel by the handle, instead pull or push it by the left and right edges.



3.4 Combining Soft Panels

The lines of the different patterns (curves, diagonal, vertical) are arranged so they have the same spacing at the edges. This allows multiple panels to be combined in the furniture to create cohesive design.



3.5 Replacing the handle

If necessary, the loop and upper part of the handle can be replaced with new parts.

To order spare parts, please contact your USM retail partner.

Dismantling

Pull the loop upwards and hold.

Using a flathead screwdriver size 1–3, press into the slot from one side until the upper part of the handle comes loose.

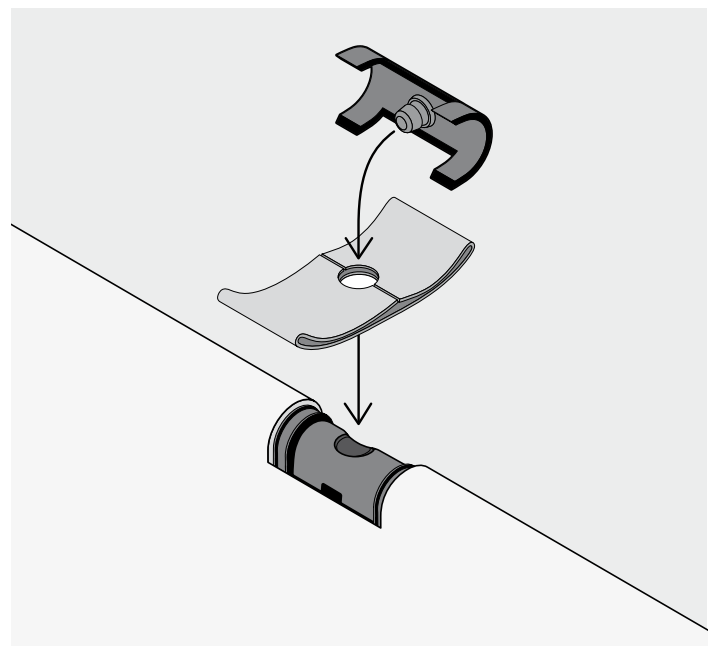
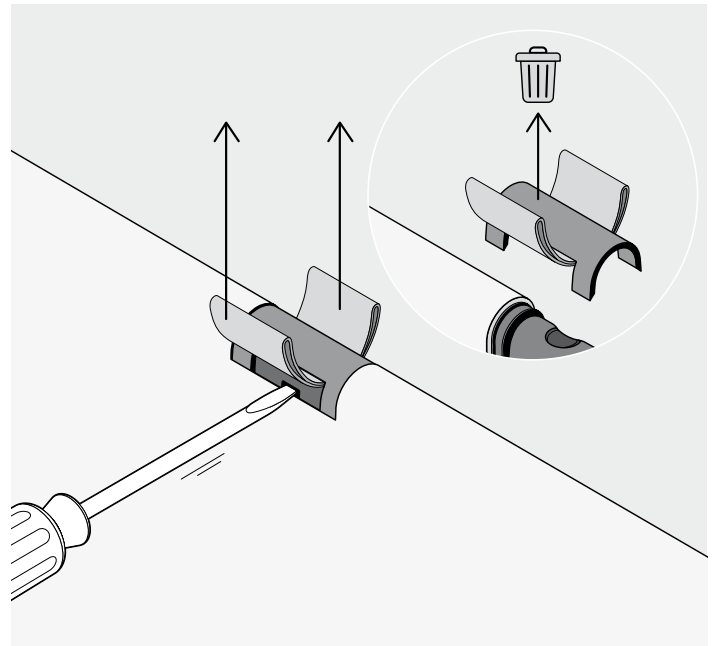


Note

After dismantling the upper part of the handle, it cannot be reused and must be replaced.

Assembly

Place the loop onto the cylinder in the panel with the seam facing upwards. Press both parts together into the slot on the panel until the upper part clicks into place.



The following cleaning methods are recommended:

4.1 Dry cleaning

Light soiling and dust can be removed from the surface with a vacuum cleaner. Avoid using brush attachments, as they may damage the material. The remaining parts (metal or plastic) can be cleaned with a damp cloth*.

4.2 Wet cleaning

In case of heavy soiling, clean with a damp cloth* and, if necessary, a gentle detergent (e.g. glass cleaner). Avoid excess rubbing where possible, as this may alter the surface.

Do pull out any fibres that are sticking out or have been dislodged, as this may cause more fibres to come loose. Instead, carefully trim any protruding fibres.



Note

Cleaning with detergents can impact the appearance, fire resistance, lightfastness and abrasion resistance.

Switzerland

USM U. Schärer Söhne AG
Thunstrasse 55, 3110 Münsingen
Phone +41 31 720 72 72, info.ch@usm.com

Germany

USM U. Schärer Söhne GmbH
Siemensstrasse 4a, 77815 Bühl
Phone +49 7223 80 94 0, info.de@usm.com

France

USM U. Schaerer Fils SA, Paris Showroom
23, rue de Bourgogne, 75007 Paris
Phone +33 1 53 59 30 37, info.fr@usm.com

United Kingdom

USM U. Schaerer Sons Ltd., London Showroom
Marylebone Square, 12 Cramer Street
London W1U 4EA
Phone +44 207 183 3470, info.uk@usm.com

USA

USM U. Schaerer Sons Inc., New York Showroom
28-30 Greene Street, New York, NY 10013
Phone +1 212 371 1230, info.us@usm.com

Japan

USM U. Schaerer Sons K.K., Tokyo Showroom
Meiji Yasuda Seimei Building 1-2F
2-1-1 Marunouchi, Chiyoda-ku, Tokyo 100-0005
Phone +81 3 6635 9420, info.jp@usm.com

China

USM Trading (Shanghai) Co. Ltd., Shanghai Showroom
Building C, 2F, Room 201, No. 12 Yongyuan Road
Jing'an District, Shanghai 200040
Phone +86 189 3977 2732, info.cn@usm.com

All other countries

contact USM Switzerland.